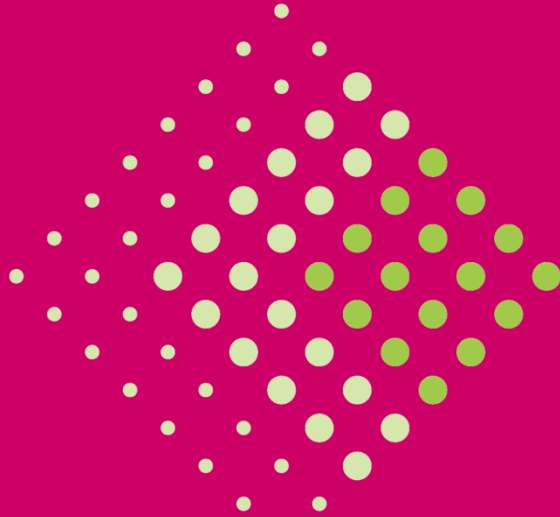

EcoVane



• *Service Brochure 2010*

Knowledge for Sustainable Value

EcoVane Energy

Efficiency Services



EcoVane's energy efficiency service, SMART[®], is a knowledge and experience based optimization system that addresses each client's specific energy saving and improvement needs. With the ability to combine real time energy information flows and system and utility optimization knowledge, EcoVane's innovative technology can provide clients with a flexible, efficient and user-friendly platform capable of performing intelligent energy management. When utilized, SMART[®] enables clients to achieve maximum energy efficiency on both a system and utility level and therefore provides both economic and social benefits.



◆ *Standing on the wave of sustainable development, EcoVane Environmental is a private knowledge-based consulting company that aims to create and develop sustainable value for its clients. Based in Shanghai China, EcoVane Environmental works closely with both domestic and international enterprises by providing:*

- *Energy Efficiency Consulting Services*
- *Product Life Cycle Analyses (LCA) Services*
- *Environmental, Health and Safety Services*

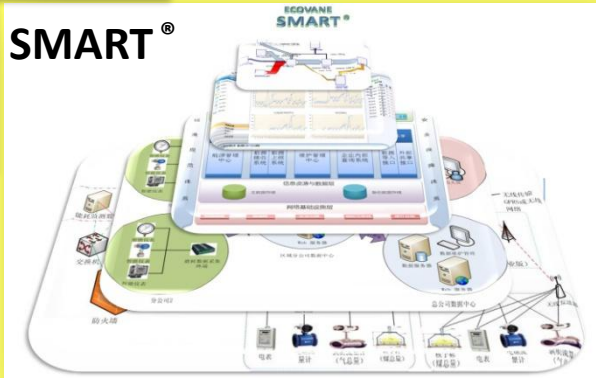


1. Energy efficiency is achieved on 3 different levels: on the top level of systems integration and optimization (e.g. electricity generation systems including boilers, turbines and condensers for a power plant); on the mid level of individual sub-system optimization (e.g. boilers) and on the bottom level of utility efficiency (e.g. motors, boiler combustion efficiency etc)

2. The smart control relies on an understanding of: system function efficiency (with minimum energy input to generate the output), the relationship between systems and utilities and individual utility efficiency (e.g. insulation, waste heat and etc)

The logic
behind

SMART[®]



The successful implementation of smart control therefore relies on: a holistic view of utility efficiency and real time and accurate responses to energy performance (i.e. reading the energy data for a specific demand period and generating and transmitting control orders to the system, manually or automatically)

The objective of SMART[®] is to increase carbon productivity in an easy, transparent, visual and automatic manner!



“What cannot be measured cannot be managed”



Design for Sustainability (Product Design & Innovation):

involves identifying green raw materials, correct processes and proper product handling and disposal methods resulting in minimized environmental impact and improved product sustainability

- Energy and Material Design Efficiency
- Product Life Cycle Management

Life Cycle Analysis (LCA):

used to assess the environmental impacts of a product/service from design to disposal therefore enabling clients to make more informed decisions and operate in a more sustainable and efficient manner

- Streamline LCA
- Comprehensive LCA

Carbon Foot-Printing:

used to monitor Green House Gas (GHG) emissions and identify opportunities where emissions can be minimized

- Green House Gas Emission Tracking and Reporting
- Carbon (and Energy) optimization

- 80/20 Principal: 80% of a product's environmental foot print is predetermined during the design stage of production



EcoVane EHS

Management Services



EcoVane is able to provide a number of services aimed at improving environmental, health and safety conditions in the work place. Our environmental services are used to identify, analyze and solve existing or potential environmental issues. These services help our clients establish environmentally sustainable operations, provide environmentally conscious products/services to customers and protect the health of our planet. In addition to our environmental services, our health and safety services help to foster a safe working environment for our clients and their employees by reducing accident occurrence and improving workplace conditions.



◆ *Here at EcoVane Environmental, we believe the harmonization of economic growth and social and environmental consideration is not a distant Utopia, but an achievable target.*





Environmental Site Assessments:

Used to identify, analyze and solve environmental issues therefore minimizing risk and maximizing cost efficiency

- Phase I and II Environmental Site Assessments
- Environmental Risk Assessment and Remediation Evaluation
- Environmental Due Diligence for Mergers and Acquisitions

EHS Employee Training:

Used to improve employees EHS awareness and establish a more holistic approach to EHS management

- EHS Management Training
- Employee Safety Training
- Industrial Hygiene Training
- Environmental Sustainability Training

Risk Management:

Used to shift our clients' approach from passive risk avoidance to active risk preparedness therefore minimizing costs imposed by fines and/or legal liability and improving business vitality

- EHS Auditing and Assessment
- Process Safety and Product Risk Control

EHS Management Support:


Used to enhance EHS management system quality and ensure sustainable EHS operations for our clients

- EHS Problem Solving
- EHS Management Procedure Development

EHS Onsite Support:

Involves on hand EHS expert assistance in order to ensure our clients' EHS service needs are fulfilled

- Construction Support
- Operation Support



“Management’s job is to work on the system so that people can work effectively in the system” – William Edwards Deming

